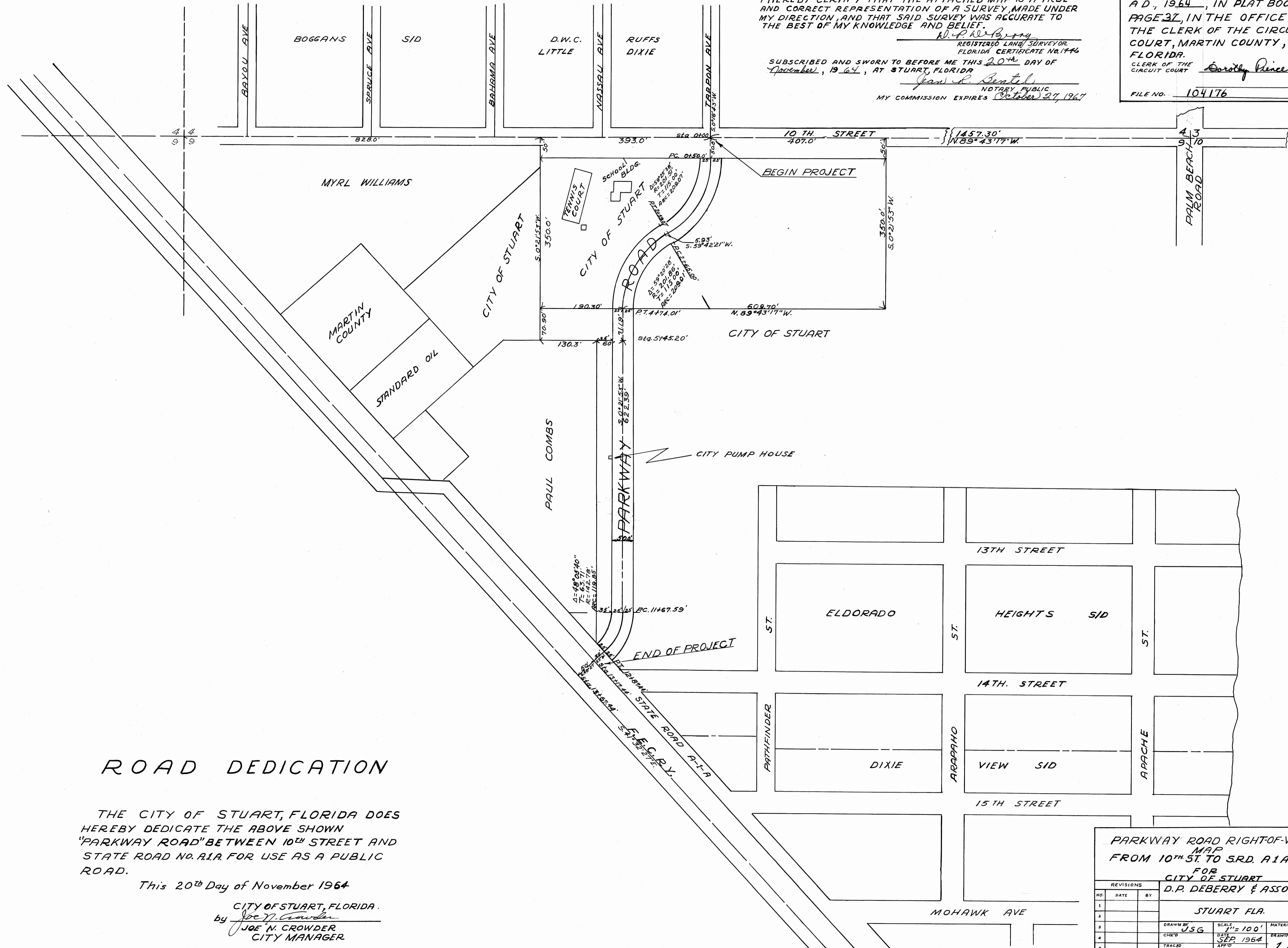


I HEREBY CERTIFY THAT THE ATTACHED MAP IS A TRUE AND CORRECT REPRESENTATION OF A SURVEY MADE UNDER MY DIRECTION, AND THAT SAID SURVEY WAS ACCURATE TO THE BEST OF MY KNOWLEDGE AND BELIEF.

*D.P. DeBerry*  
 REGISTERED LAND SURVEYOR  
 FLORIDA CERTIFICATE NO. 1746  
 SUBSCRIBED AND SWORN TO BEFORE ME THIS 20<sup>th</sup> DAY OF November, 1964, AT STUART, FLORIDA  
*Jan L. Smith*  
 NOTARY PUBLIC  
 MY COMMISSION EXPIRES October 27, 1967

THIS PLAT FILED FOR RECORD AT 3:01 THIS 30<sup>th</sup> DAY OF November, A.D., 1964, IN PLAT BOOK 4, PAGE 37, IN THE OFFICE OF THE CLERK OF THE CIRCUIT COURT, MARTIN COUNTY, FLORIDA.  
 CLERK OF THE CIRCUIT COURT *Errolly Pince*  
 FILE NO. 104176



### ROAD DEDICATION

THE CITY OF STUART, FLORIDA DOES HEREBY DEDICATE THE ABOVE SHOWN "PARKWAY ROAD" BETWEEN 10<sup>th</sup> STREET AND STATE ROAD No. A1A FOR USE AS A PUBLIC ROAD.

This 20<sup>th</sup> Day of November 1964

CITY OF STUART, FLORIDA.  
 by *Joe N. Crowder*  
 JOE N. CROWDER  
 CITY MANAGER

PARKWAY ROAD RIGHT-OF-WAY MAP FROM 10<sup>th</sup> ST. TO SRD. A1A FOR CITY OF STUART FOR D.P. DEBERRY & ASSOC.

REVISIONS		
NO.	DATE	BY
1		
2		
3		
4		
5		

DRAWN BY JSG SCALE 1" = 100' MATERIAL  
 CHK'D DATE SEP 1964 DRAWING NO.  
 TRACED APP'D 1 OF 1